

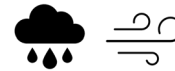
What is Cucurbit Downy Mildew?

Cucurbit Downy Mildew is caused by the water mold, *Pseudoperonospora cubensis*

- Infects all cucurbits; most devastating in cucumbers and melons.
- Destructive to foliar health leading to a reduction in yield and fruit quality.



Downy Mildew on Cucumber (upper & lower leaf)



- Prefers cool and moist conditions
- Dispersed by wind or water splash

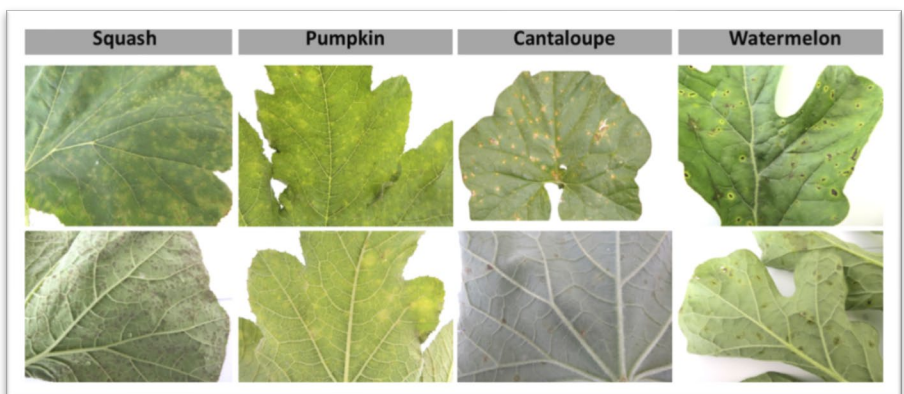
Signs & Symptoms

- Small, water-soaked lesions on upper leaf surface that become chlorotic.
- Usually restricted by leaf veins.
- Lesions on the underside of the leaf appear dark brown, gray, or violet-black.



Management Options

- Plant resistant varieties
- Wide row spacing to promote air flow
- Drip irrigation
- Rotate fungicides with different modes of action



<https://doi.org/10.1094/PHP-12-19-0095-DG>

Symptoms can vary depending on the cucurbit

For more information:

- Mark Gleason, Iowa State University (mgleason@iastate.edu)
- Sarah Pethybridge, Cornell University (sjp277@cornell.edu)



cucurbit.plantpath.iastate.edu

@TCucurbit

The Current Cucurbit